

28 *f* in the sky. *mf* Ba - by born a king, —

f *mf* Ba-by born a king, —

31 ly - ing in a stall, —

ly-ing in a stall, — ti - ny ba-by

34 *f* ti - ny ba-by boy, — *f* (5) rul - er o - ver all.

boy, — yet rul-er o-ver all.

37 *mf*

See the shep - herds kneel-ing, — hear his moth - er

mf

40

sing. — hear — her sing. — Ba-by in a man-ger,

sing. sing. — hear — her sing. —

sing, hear — her sing. —

mf

43 *f* (6)

ba-by born a king. —

f *mf*

46

mf

An - gel voic - es in the night— filled the shep-herds with—

49

mf 7

“Peace on earth,”— was their cry.—

— great fright.—

52

f *ff*

“Glo-ry hal-le-lu-jah to God on high!”— Glo - ry!

f *ff* *mf*

55 *mf*

Hal - le - lu - jah, glo - ry! Hal - le - lu - jah,

mf

58 *f* 8

glo - ry! Glo-ry be to God!

f

61

Ba-by born a king, — ly-ing in a

Ba - by born a king, —

stall, ti-ny ba-by boy,
 ly-ing in a stall, ti-ny ba-by boy,

9 yet rul-er o-ver all. See the shep-herds
 rul-er o-ver all. See the shep-herds
 rul-er o-ver all.

70 sing.
 kneel-ing, hear his moth-er sing, hear
 sing, hear her sing.

73 10

her sing. Ba-by in a man-ger, ba-by born a

76

king. Ba-by in a man-ger,

79 *rit.* *ff*

ba-by born a king, a king!

rit. *ff*

Baby Born a King

John Parker

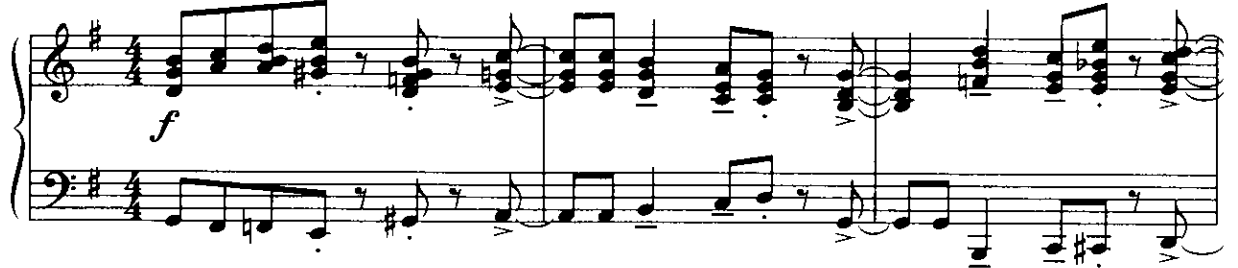
SATB with optional Instrumental Ensemble*

Mark Hayes

Ranges: Soprano Alto Tenor Bass



① Spirited ♩ = 120-126



4 SA *mf*
Ba-by born a king, ly-ing in a

TB *mf*

Vocal staves for Soprano Alto and Tenor Bass. The Soprano Alto part is on a treble clef staff and the Tenor Bass part is on a bass clef staff. Both parts are marked *mf* (mezzo-forte). The lyrics are "Ba-by born a king, ly-ing in a".Piano accompaniment for the second system, featuring a treble and bass clef staff. The dynamic marking is *mf* (mezzo-forte).

7 stall, ti-ny ba-by boy,

Vocal staves for Soprano Alto and Tenor Bass. The Soprano Alto part is on a treble clef staff and the Tenor Bass part is on a bass clef staff. The lyrics are "stall, ti-ny ba-by boy,".

Piano accompaniment for the third system, featuring a treble and bass clef staff.

Duration: approx. 2:35

*Also available: Score and parts for A. Sax., T. Sax., 2 Tpt., 2 Tbn., and Rhythm (30/2510H);
Performance/Accompaniment CD (99/2427H).

10 2

— yet rul - er o - ver all. See the shep - herds

13

kneel - ing, — hear his moth - er sing, — hear —
sing, — hear —

16

her sing. — Ba - by in a man - ger, ba - by born a

19 3 *mf*

king. Long a-go in a

22

ti - ny town, — a light from God to earth — came down. —

25

mf saw that light glow-ing

Shep - herds liv-ing in a field near-by —